

Rainy Day Activity Cards Collection

18 Brilliant Indoor Activities for Young Scientists

Welcome to Your Child's Scientific Adventure!

Transform any ordinary day into an extraordinary learning journey with these 14 engaging Plant Detective Activity Cards! Designed especially for home-educating families, these colourful cards will turn your little ones into enthusiastic young scientists, even when the weather keeps you indoors.

Each card combines hands-on investigation with the excitement of being a real detective, making learning feel like play whilst building essential scientific skills.

How to Print Your Cards for Best Results **For Everyday Use:**

Print on 200–250gsm cardstock for durability
Select "A4 Landscape" in your printer settings
Choose "Actual Size" or "100% scale" (never "Fit to Page")
Print double-sided for the complete front and back design
Skip the final instruction page – you won't need it once the cards are printed!

Preparing Your Cards

1. Cut along the dashed centre lines to separate the instruction (back) from the activity title (front)
2. Keep front and back together with a paperclip or in small envelopes
3. Create an activity box or folder to store all 14 cards
4. Let children help organise the cards by difficulty or favourite activities

For Long-Term Durability:

- Laminate each printed card using A4 laminating pouches
- This creates wipeable surfaces perfect for messy experiments
- Laminated cards can be used outdoors in light rain
- Consider rounded corner laminating pouches for safer handling by younger children

Professional Tip:

Print one set first to check colours and sizing before printing the full collection. Different printers may need slight adjustments for optimal results.

Rainy Day Motivation Magic

Making Every Day an Adventure:

"Today's weather might be grey, but our discoveries will be brilliant!"

Remember, some of the world's greatest scientists made their most exciting discoveries indoors. Here's how to keep your young detectives motivated:

Create Excitement:

- Announce each activity like a mission briefing: "Detective [Child's name], we have an urgent plant mystery that needs solving!"
- Use spy voices and dramatic countdowns to build anticipation
- Let them choose which detective mission to tackle first
- Create detective badges or certificates for completed investigations

Celebrate Every Discovery:

- Take photos of their experiments and observations
- Create a "Detective Wall" to display their findings
- Share discoveries with grandparents via video calls
- Start a family science journal recording all their investigations

Building Confidence:

- There are no wrong answers – only interesting observations!
- Ask open questions: "What do you notice?" "Why do you think that happened?"
- Encourage predictions before starting each activity
- Celebrate mistakes as learning opportunities
-

Educational Benefits Hidden in the Fun

While your children are having a brilliant time, they're also developing:

- Scientific method through observation and hypothesis
- Mathematical skills through measuring and recording
- Literacy through reading instructions and recording findings
- Fine motor skills through hands-on manipulation
- Problem-solving abilities through investigation
- Environmental awareness through plant care
- Patience and responsibility through daily observations

Extending the Learning

Cross-Curricular Connections:

- **Art:** Create botanical illustrations of discoveries
- **Writing:** Compose detective reports and stories
- **Geography:** Research where different plants grow worldwide
- **History:** Learn about famous botanists and plant explorers
- **Technology:** Research plant facts online or create digital presentations

Family Science Time:

- Involve siblings of different ages with adapted roles
- Create family experiments using multiple cards together
- Plan weekly "Detective Meetings" to share findings
- Connect activities to real garden or houseplant care

You've Got This

You don't need to be a scientist to guide these activities!

Read the cards together – you're learning alongside your child

"I wonder what will happen if..." is your most powerful phrase

Let children lead their own investigations

Focus on the process, not just results

Embrace the mess – it means real learning is happening!

Weather-Proof Learning

These cards are specifically designed to work in any weather:

Rainy days: Perfect for indoor investigations

Sunny days: Take observations outside for fresh air

Snowy days: Compare indoor plant growth to winter dormancy

Any day: Every day is perfect for scientific discovery!

Final Encouragement

- **Remember, every expert was once a beginner. Every professional scientist started as a curious child asking "Why?" and "How?" Your home is the perfect laboratory, and your child's natural curiosity is the most powerful learning tool.**
- **These 14 Plant Detective Activity Cards aren't just keeping children busy on rainy days – they're nurturing the next generation of environmental stewards, critical thinkers, and lifelong learners.**
- **So grab your magnifying glasses, put on your detective hats, and prepare for some brilliant discoveries! The plant kingdom is waiting to reveal its secrets to your young scientists.**

Happy investigating, and remember - every great discovery starts with a single curious question! 



Mad Scientist Kitchen Lab



Ages 6-15

30-45 mins



Detective Equipment Needed:

✓ Various kitchen items ✓ Measuring cups ✓ pH strips ✓
Test tubes/small jars ✓ Detective lab notebook



Mission Instructions:

1. Test different liquids on bean seeds (water, milk, juice)
2. Create plant food mixtures using kitchen ingredients
3. Investigate which combinations help seeds sprout fastest
4. Document results like a real scientist
5. Form hypotheses about plant nutrition



Parent Detective Tip:

Great for introducing scientific method. Use eggshells for calcium, coffee grounds for nitrogen!



Plant Engineering Challenge



Ages 7-16

25-45 mins



Detective Equipment Needed:

✓ Craft sticks ✓ String/yarn ✓ Tape ✓ Cardboard ✓ Small
potted plants ✓ Building challenge cards



Mission Instructions:

1. Study how plants grow and what support they need
2. Design structures using only provided materials
3. Test different support methods (stakes, cages, trellises)
4. Challenge: build strongest support using fewest materials
5. Document which designs work best and why



Parent Detective Tip:

Combines engineering with botany. Great for kinesthetic learners who like hands-on building!

Seed Treasure Hunt Detective



Ages 4-12

20-30 mins

Detective Equipment Needed:

✓ **Magnifying glass** ✓ **Collection container** ✓ **Detective notebook** ✓ **Various household items with seeds**

Mission Instructions:

1. **Search kitchen for seed treasures (apples, peppers, tomatoes)**
2. **Examine each seed with magnifying glass**
3. **Draw findings in detective notebook**
4. **Sort seeds by size, shape, and colour**
5. **Test which seeds sink or float**

Parent Detective Tip:

Save interesting seeds for future planting experiments!
Great vocabulary builder with descriptive words.

Plant Doctor Health Inspector



Ages 5-14

15-25 mins

Detective Equipment Needed:

✓ **Magnifying glass** ✓ **Ruler** ✓ **Health check chart** ✓
Coloured pencils ✓ **Camera (optional)**

Health Investigation Steps:

1. **Examine each plant like a plant doctor**
2. **Check leaves for colour, spots, or damage**
3. **Feel soil – too dry or too wet?**
4. **Measure plant height and record**
5. **Create health report with recommendations**

Parent Detective Tip:

Perfect for teaching responsibility and observation skills.
Let kids be the "plant doctors" for a week!

Leaf Art Detective Gallery



Ages 3-12

20-35 mins

Detective Equipment Needed:

✓ Various leaves ✓ Paper ✓ Crayons/colored pencils ✓
Magnifying glass ✓ Collection bag

Mission Instructions:

1. Collect different shaped leaves from around home/garden
2. Examine leaf patterns, veins, and edges with magnifying glass
3. Create leaf rubbings and prints
4. Sort leaves by detective categories (size, shape, texture)
5. Make leaf identification guide book

Parent Detective Tip:

Perfect for developing fine motor skills and artistic expression. Press leaves between books to preserve!

Window Garden Laboratory



Ages 5-14

30 -60 mins

Detective Equipment Needed:

✓ Small containers ✓ Potting soil ✓ Seeds ✓ Labels ✓
Measuring tools ✓ Growth chart

Mission Instructions:

1. Set up controlled growing experiments on windowsill
2. Plant same seeds in different conditions (light/shade sides)
3. Create daily observation log with measurements
4. Test variables: water amount, container size, seed depth
5. Present findings like a research scientist

Parent Detective Tip:

Long-term project perfect for teaching patience and daily responsibility. Great for science fair projects!



Plant Temperature Detective 🤖



Ages 8–16

20–35 mins



Detective Equipment Needed:

✓ Thermometer ✓ Small plants ✓ Different locations ✓ Data recording sheet ✓ Timer



Mission Instructions:

1. Measure temperature in different areas of home
2. Place identical plants in various temperature zones
3. Record plant responses over several days
4. Investigate: Do plants prefer warm or cool spots?
5. Create temperature preference guide for different plants



Parent Detective Tip:

Introduces data collection and graphing skills. Perfect connection to weather and climate discussions!



Light Detective Mission ⚡



Ages 5–14

20 – 35 mins



Detective Equipment Needed:

✓ Flashlight ✓ Colored filters ✓ Small plants ✓ Cardboard boxes ✓ Timer ✓ Camera (optional)



Mission Instructions:

1. Test how plants respond to different light colors
2. Create light and shadow experiments using boxes
3. Observe plant movement toward light sources
4. Time how quickly plants bend toward light
5. Investigate: Can plants grow under artificial light?



Parent Detective Tip:

Great introduction to photosynthesis concepts. Use LED lights for safe experimentation!

Plant Cloning Laboratory



Ages 8-16

20-35 mins

Detective Equipment Needed:

✓ Plant cuttings ✓ Water containers ✓ Rooting hormone (optional) ✓ Labels ✓ Observation journal

Mission Instructions:

1. Take cuttings from houseplants (pothos, mint work well)
2. Set up cloning experiments in water vs. soil
3. Document root development daily
4. Compare success rates of different plants
5. Investigate: Which plants clone easiest and why?

Parent Detective Tip:

Fascinating introduction to plant reproduction. Kids love seeing roots develop! Perfect for gifts to grandparents.

Rainy Day Water Cycle Detective



Ages 5-14

20-40 mins

Detective Equipment Needed:

✓ Large clear bowl ✓ Cling film ✓ Small weight ✓ Hot water
✓ Ice cubes ✓ Observation chart

Mission Instructions:

1. Pour hot water into bowl and cover tightly with cling film
2. Place ice cubes on top of the cling film
3. Watch condensation form and "rain" droplets fall
4. Record observations every 10 minutes
5. Connect findings to real weather and plant watering

Parent Detective Tip:

Perfect rainy day activity! Brilliant for explaining where rain comes from and why plants need it.

Indoor Air Quality Plant Investigation



Ages 8-16

20-45 mins

Detective Equipment Needed:

✓ Different houseplants ✓ White tissue paper ✓ Tape ✓
Research materials ✓ Air quality chart ✓ Camera

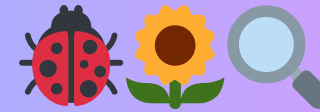
Mission Instructions:

1. Research NASA's top air-cleaning plants online
2. Test dust collection by taping tissue near different plants
3. Compare air "freshness" in rooms with/without plants
4. Investigate which plants work best for bedrooms vs bathrooms
5. Create family recommendations for healthier indoor air

Parent Detective Tip:

Fantastic for environmental awareness! Spider plants and peace lilies are brilliant air cleaners to investigate.

Garden Wildlife Detective Patrol



Ages 5-14

30 - 50 mins

Detective Equipment Needed:

✓ Magnifying glass ✓ Small spade ✓ Collection containers
✓ Wildlife ID chart ✓ Camera ✓ Notebook

Mission Instructions:

1. Carefully dig small soil samples and examine tiny creatures
2. Hunt for beneficial insects on plant leaves
3. Look for evidence of wildlife helpers (bee pollen, butterfly eggs)
4. Create identification chart of garden friends vs pests
5. Design wildlife-friendly improvements for the garden

Parent Detective Tip:

Brilliant for connecting plants to ecosystems! Even indoor plants can attract tiny beneficial creatures.



Plant Communication Code Breaker 🌱



Ages 8-16

30-40 mins



Detective Equipment Needed:

✓ Two potted plants ✓ Torch ✓ Cardboard ✓ Timer ✓
Observation sheets ✓ Coloured filters (optional)



Mission Instructions:

1. Shine torch on one plant and observe the other nearby
2. Test if plants "warn" each other by blocking light to one
3. Create light signals (like morse code) and watch responses
4. Time how quickly plants react to changes
5. Decode the secret language of plant communication



Parent Detective Tip:

Amazing introduction to plant biology! Plants really do "communicate" through chemical signals.



Secret Sprouting Spy Mission 🌱



Ages 4-14

20 mins set-up



Detective Equipment Needed:

✓ Identical seeds ✓ Small pots ✓ Spy labels ✓ Secret hiding spots ✓ Measuring tape ✓ Spy notebook



Mission Instructions:

1. Plant identical seeds in matching pots
2. Hide pots in different secret locations (cupboard, windowsill, bathroom)
3. Check - spy on plants daily and record findings in code
4. Measure growth and compare spy locations
5. Create "Top Secret Sprouting Report" with best hiding spots



Parent Detective Tip:

Children love the spy theme! Great for teaching scientific method and patience with daily observations.

Sink or Float Investigation



Ages 3 - 10

15 mins



Detective Equipment Needed:

- ✓ Large bowl of water ✓ various plant materials
- ✓ towel for spills



Mission Instructions:

1. Collect different natural materials (twigs, leaves, seeds, petals).
2. Predict which will sink or float, then test!



Parent Detective Tip:

Wonder together: "Can you guess why some float and others sink? Does size matter?"

Rainy day bonus: Freeze leaves in ice cubes and watch them melt!

Plant Pressing Station



Ages 4-14

10 mins set-up



Detective Equipment Needed:

- ✓ Heavy books ✓ baking paper or kitchen paper
- ✓ interesting plant specimens



Mission Instructions:

1. Collect interesting leaves and flowers (with permission)
2. Press between pages of heavy books with paper protecting the pages.



Parent Detective Tip:

Wonder together: "What do you think will happen to these plants as they dry?"

Rainy day bonus: Check progress daily - watch the transformation!

Seed Sorting Challenge



Ages 3 – 10

15 mins



Detective Equipment Needed:

- ✓Various dried seeds ✓egg cartons or small bowls
- ✓tweezers (optional)



Mission Instructions:

1. Gather different seeds (dried beans, lentils, sunflower, pumpkin).
2. Sort by size, colour, shape. Count and create patterns!

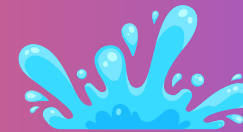


Parent Detective Tip:

Wonder together: "Why do you think different plants have such different sized seeds?"

Rainy day bonus: Make seed art pictures – glue onto cardboard!

Water Play Investigation



Ages 3 – 10

20 mins



Detective Equipment Needed:

- ✓Bowls ✓water ✓plant materials ✓kitchen tools (whisks, spoons)



Mission Instructions:

1. Fill containers with water and experiment!
2. Float different plant materials
3. create water rainbows with leaves
4. make bubble fountains.



Parent Detective Tip:

Wonder together: "Why do some plant parts float and others sink?"

Rainy day bonus: Freeze leaves in ice cubes and watch them melt!